

Project Name
The Kansas City
Power & Light
District

Location
Kansas City, Mo.

Square Footage
602,950 square
feet

Design Architect
Beyer Blinder Belle

Developer/Owner
The Cordish Co.

Credits

Architects
Booth Hansen
Helix Architecture

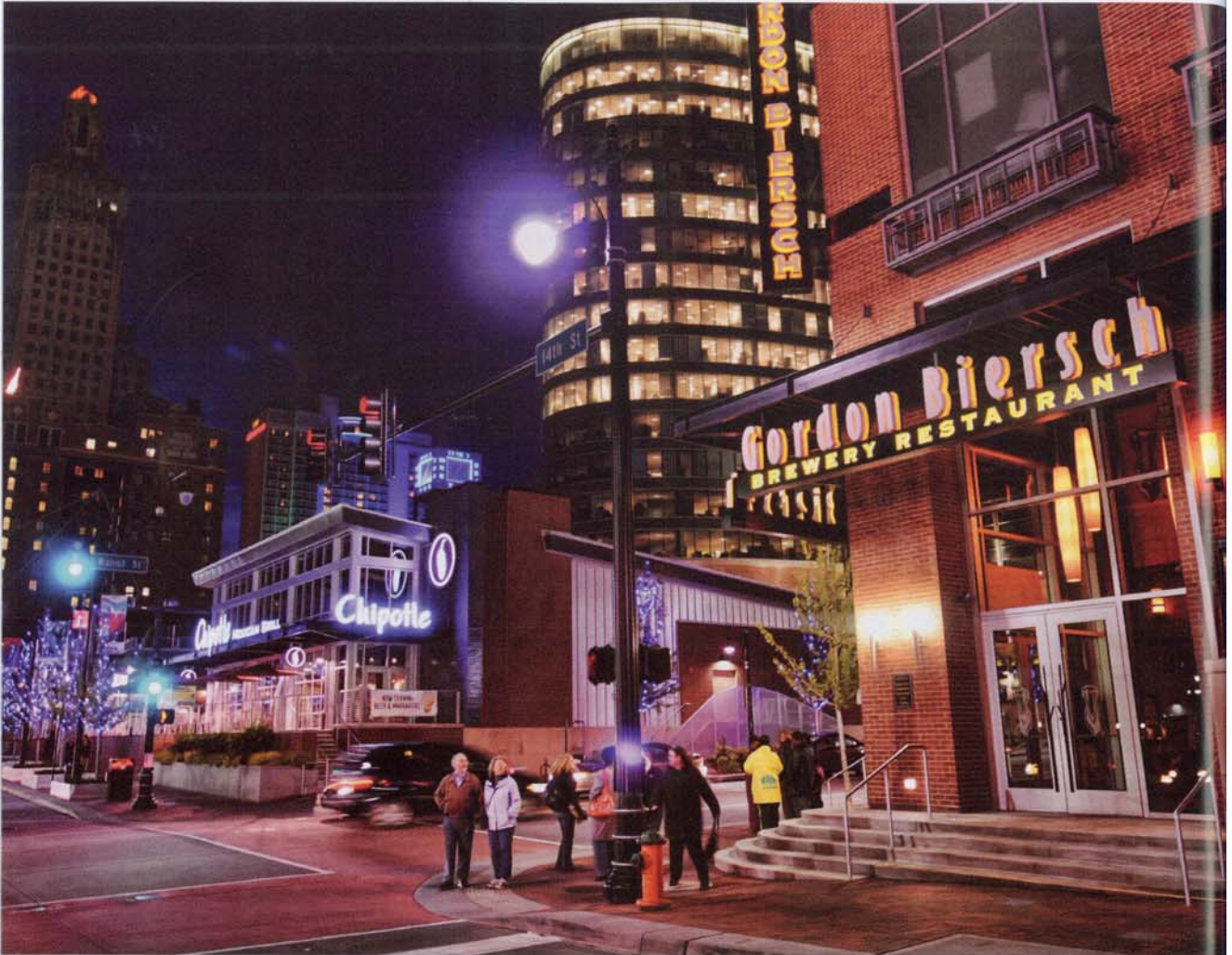
MEP Engineers
Henderson Engineers
Building System
Engineers

Civil Engineer
Taliaferro & Browne

Structural Engineers
Walter P. Moore
Greif, Anhalt,
Schloemer
Norton & Schmidt

Landscaping
Young & Dring
Landscape Architects

Contractors
JE Dunn Construction
Jess Burts
Enterprises



Kansas City Power & Light

New Mixed-Use or Multi-Use Development

Mixed-use is a burgeoning field and the industry is in need of examples of projects that get the concept right. In that vein, there is a lot to like with Cordish Co.'s Kansas City Power & Light District. The project is "sympathetic to the streetscape and location." It "respects the downtown street grid while establishing cross-block connections," and engages

pedestrians by employing great variety from block to block. Judges liked, as well, how the project infuses new life and entertainment into the city. The one drawback on the project is that, so far, it has been too reliant on restaurants and bars. To truly be seen as a mixed-use model, other uses—retail, offices and restaurants—need to thrive as well. So it will remain a project to watch as it matures.